

2n  
ESO

ang.

Llinatges: \_\_\_\_\_

Nom: \_\_\_\_\_

Curs: 2n ESO Grup: \_\_\_\_\_

Centre: \_\_\_\_\_

Avaluació de diagnòstic

2010-2011

**model 1**

Competència en comunicació lingüística

llengua **anglesa**



**Govern  
de les Illes Balears**

Institut d'Avaluació  
i Qualitat del Sistema Educatiu

## INSTRUCCIONS

En aquesta prova, **escoltaràs primer** dos **textos orals** i hauràs de **contestar** unes **preguntes** referides als textos que has escoltat. **A continuació**, hauràs de **redactar** dos **textos**. **Finalment**, hauràs de **llegir dos textos** i **contestar-ne** unes **preguntes**. Recorda que has de posar molta atenció i fer-ho tan bé com puguis.

Hi trobaràs distints tipus de preguntes. Algunes tenen quatre opcions de resposta (A, B, C, D). Has de triar la correcta i encerclar la lletra que hi hagi devora. L'exemple 1 n'és una mostra.

### Exemple 1

**How many months has a year?**

- A. 2 months.
- B. 17 months.
- C. 12 months.
- D. 11 months.

**Rectificacions:** si després d'haver contestat, decideixes canviar la teva resposta, ratlla amb una **X** la primera elecció i encercla a continuació la resposta correcta, tal como es mostra en l'exemple 2, en què primer es va triar la resposta A i després la C.

### Exemple 2

**How many months has a year?**

- A. 2 months.
- B. 17 months.
- C. 12 months.
- D. 11 months.

En altres preguntes, hauràs de completar la resposta en l'espai assenyalat al teu quadernet.

### **Exemple 3**

**Now write a note to your brother to leave him a message.**

- 
- 

### **RECORDA**

Disposes d'**una hora** per realitzar la prova.  
Per tant, treballa sense perdre el temps.

---

## LISTENING COMPREHENSION 1

Read the following questions first. You have two minutes.  
 Now you are going to listen to a dialogue twice. Listen to it carefully and then answer the questions according to the text you have heard.

### AT THE TOURIST INFORMATION CENTRE

1. Why does the man want to travel?

- 

2. Where does the man want to go?

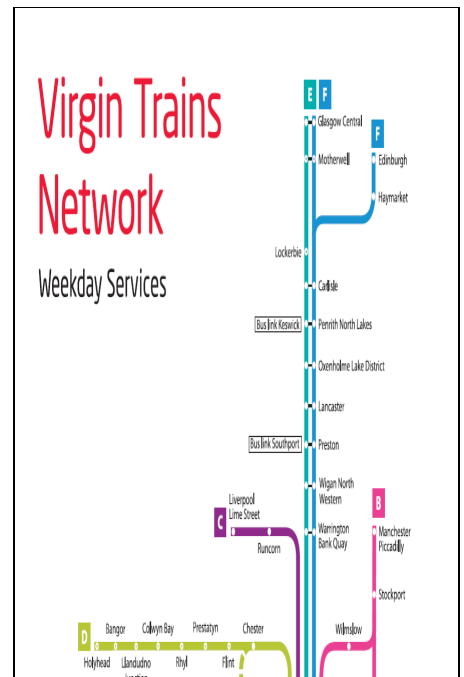
- A. To London.
- B. To England.
- C. To Manchester.
- D. To Euston.

3. How much is the train ticket?

- A. £13.00
- B. £29.00
- C. £19.00
- D. £69.00

4. Where should the man get off the train?

- A. At Manchester Piccadilly Station.
- B. At London Piccadilly Station.
- C. At Manchester Football Station.
- D. At London Euston Station.



**5. Which sentence is TRUE?**

- A. The woman doesn't help the man.
  - B. The man has been to England before.
  - C. The man works for the Tourist Information Centre.
  - D. The man wants to know how to go to Manchester.
- 

**LISTENING COMPREHENSION 2**

**Read the following questions first. You have two minutes.**

**Now you are going to listen to a dialogue twice. Listen to it carefully and then answer the questions according to the text you have heard.**

---

**A SURVEY ON TV WATCHING HABITS****6. What's the woman's name?**

- A. Ana Wilder.
  - B. Anne Wylder.
  - C. Anne Wilder.
  - D. Anne Bill.
- 

**7. What's the woman's telephone number?**

- A. 05512063.
  - B. 05112063.
  - C. 05122064.
  - D. 05122063.
- 

**8. Complete the following sentence.**

The woman was born in \_\_\_\_\_ on 9<sup>th</sup> \_\_\_\_\_ 1949.



**9. Which of the following sentences is FALSE?**

- A. The woman is married.
- B. The woman is single.
- C. The woman is American.
- D. The woman lives in Britain.

**10. What's the woman's job?**

- 

**WRITING 1**

**Joan's typical weekend**

Joan has been asked to write a list with what he usually does at a typical weekend. Here's the result:

Friday evening .....	. stay in . play computer games with Andreu
<b>Saturday</b>	
morning .....	. play football with my team
afternoon .....	. cinema with friends
evening .....	. go out friend's party . sleepover Miquel's house
<b>Sunday</b>	
morning .....	. get up late
afternoon .....	. go to ONO's stadium - see Mallorca . watch football on TV
evening .....	. do my school's homework

**Fill in this chart with information about you and use it to write your own composition.**

**PLAN**

Friday evening .....

Saturday morning .....

afternoon .....

evening .....

Sunday morning .....

afternoon .....

evening .....

**11. Now, write your own text (60-80 words)****MY TYPICAL WEEKEND**

•

---

**11a****11b****11c****11d****11e**

**WRITING 2****MYTOWN**

**You are going to write a text about your hometown. Think about where you live. Make some notes about these questions.**

1. What does your town look like? Is it very big? Are there many trees and mountains? Is it near the sea?
2. Are there many facilities in your town: museums, libraries, sport centres, parks, cinemas, discos, theatres?
3. What do young people usually do in their free time?
4. Where do they usually meet?
5. Do you like your town?

**This is information to help you; use it as a guide to write the final text. It is not necessary to write about everything in the questions and you can add other information.**

**PLAN**

•



12. Now, write your text (60-80 words).

**My Town**

•

---

12a

12b

12c

12d

12e

**READING COMPREHENSION 1**

Read the texts carefully and answer the questions.

**THE CYCLIST**

Tom is a very active person and he often goes out to the country to ride his bike at the weekends. He sometimes goes with his friends but he usually rides alone. Unfortunately, Tom has an accident nearly every time he goes, so when his friends see him at school on Monday morning he's often got a pain in his back or in his leg or something similar. Tom also plays football on Mondays and Wednesdays. He's not very good but he always plays because he likes all kinds of sport.

This weekend Tom is not out in the country and he can't go out and ride his bike because he's in bed. He's got a headache, a sore throat and he's feeling very tired. His mum says he's got the flu and she says he can't play football this week either. Tom never misses a game of football and he's not happy!

(Adapted from English Zone 2 Pearson Education, SA. 2002)

13. He \_\_\_\_\_ goes with his friends.

- A. always.
- B. sometimes.
- C. never.
- D. ever.

**14. On Mondays he often has...**

- A. the flu.
  - B. a pain.
  - C. a headache.
  - D. a sore throat.
- 

**15. He \_\_\_\_\_ sport.**

- A. like.
  - B. likes.
  - C. don't like.
  - D. doesn't like.
- 

**16. According to the text, which of the following sentences is TRUE?**

- A. Tom is a dynamic person.
  - B. He is very good at sport.
  - C. He plays tennis on Mondays.
  - D. On Monday morning he never goes to school.
- 

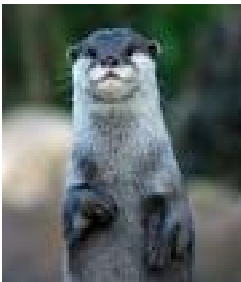
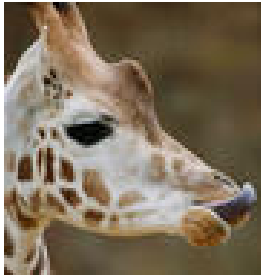
**17. Why isn't Tom happy this weekend?**

- 



**READING COMPREHENSION 2**

**ZSL LONDON ZOO**



**Visitor Information**

With so much to see and do, a visit to ZSL London Zoo is the perfect day out for people of all ages.

**Ticket Prices**

**Winter Ticket Prices** (Until March 2010)

<b>Ticket Type</b>	<b>Price</b>
• Adult (16-59 years) .....	£ 14.80
• Child (3-15 years) .....	£ 11.80
• Under 3 .....	free
• Student over 16/Senior over 60/Disabled .....	£ 13.30
• Saver Ticket (2 adults and two children or one adult and 3 children) .....	£ 47.70

**Book online and jump the queue**

The fastest way to get into the zoo is by buying your ticket in advance.

**Terms of entry**

- Children under 16 will not be admitted without an adult.
- We do not permit re-entry to the zoo.
- No dogs are permitted on the ZSL London Zoo premises.
- Bicycles are not permitted on Zoo premises.
- Scooters, rollerskates, rollerblades, skateboards are not permitted on Zoo premises.

**Opening Times**

Until the 12 <sup>th</sup> February 2010	10.00	16.00
--	-------	-------

- ZSL London Zoo is open every day of the year except Christmas Day.
- Last admission is one hour before advertised closing time.

Adapted from <http://www.zsl.org/zsl-london-zoo/visit/>

**18. If you are 14 years old, how much will your ticket cost?**

- A. £ 14.80
- B. £ 13.80
- C. £ 12.80
- D. £ 11.80

**19. You can't get into the Zoo...**

- A. today.
- B. on 12<sup>th</sup> February.
- C. on 25<sup>th</sup> December.
- D. during all Christmas Holidays.

---

**20. According to the text, you can't take your dog to the zoo. In which part can you read it?**

- A. Ticket prices.
  - B. Opening times.
  - C. Terms of entry.
  - D. Book online and jump the queue.
- 

**21. Which of these sentences is FALSE?**

- A. There are skateboards in the Zoo.
  - B. You can't buy your ticket online.
  - C. There is a special price for students.
  - D. ZSL London Zoo is not open every day of the year.
- 

**22. Peter and his family visited ZSL London Zoo last January. Peter is twelve years old, his sister is four, his dad is forty and his mum is forty-two. How much did they pay?**

•

---