

2n  
ESO

ang.

Llinatges:

Nom:

Curs: 2n ESO Grup:

Centre:

Avaluació de diagnòstic  
2010-2011  
**model 2**

Competència en comunicació lingüística  
llengua **anglesa**



Govern  
de les Illes Balears

Institut d'Avaluació  
i Qualitat del Sistema Educatiu

**INSTRUCCIONS**

En aquesta prova, **escoltaràs primer** dos **textos orals** i hauràs de **contestar** unes **preguntes** referides als textos que has escoltat. **A continuació**, hauràs de **redactar** dos **textos**. **Finalment**, hauràs de **llegir dos textos** i **contestar-ne** unes **preguntes**. Recorda que has de posar molta atenció i fer-ho tan bé com puguis.

Hi trobaràs distints tipus de preguntes. Algunes tenen quatre opcions de resposta (A, B, C, D). Has de triar la correcta i encerclar la lletra que hi hagi devora. L'exemple 1 n'és una mostra.

**Exemple 1****How many months has a year?**

- A. 2 months.
- B. 17 months.
- C. 12 months.
- D. 11 months.

**Rectificacions:** si després d'haver contestat, decideixes canviar la teva resposta, ratlla amb una **X** la primera elecció i encercla a continuació la resposta correcta, tal como es mostra en l'exemple 2, en què primer es va triar la resposta A i després la C.

**Exemple 2****How many months has a year?**

- A. 2 months.
- B. 17 months.
- C. 12 months.
- D. 11 months.

En altres preguntes, hauràs de completar la resposta en l'espai assenyalat al teu quadernet.

### **Exemple 3**

**Now write a note to your brother to leave him a message.**

- 
- 

### **RECORDA**

Disposes d'**una hora** per realitzar la prova.  
Per tant, treballa sense perdre el temps.

---

## LISTENING COMPREHENSION 1

Read the following questions first. You have two minutes.  
 Now you are going to listen to a dialogue twice. Listen to it carefully and then answer the questions according to the text you have heard.

### AT THE TOURIST INFORMATION CENTRE

1. Why does the man want to travel?

- 

2. Where does the man want to go?

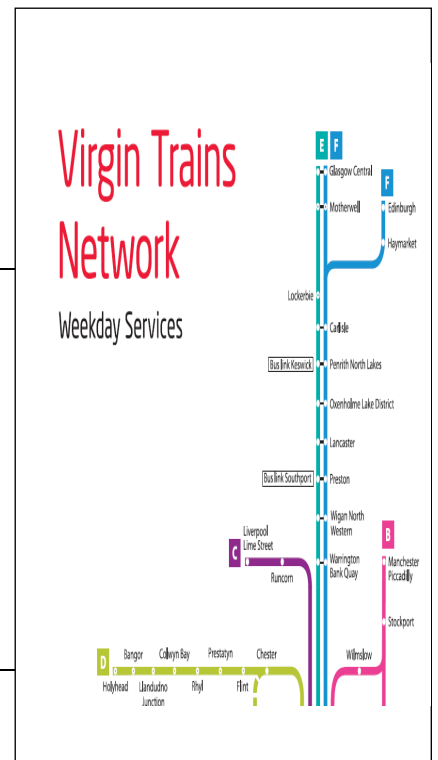
- A. To London.
- B. To England.
- C. To Manchester.
- D. To Euston.

3. How much is the train ticket?

- A. £13.00
- B. £29.00
- C. £19.00
- D. £69.00

4. Where should the man get off the train?

- A. At Manchester Piccadilly Station.
- B. At London Piccadilly Station.
- C. At Manchester Football Station.
- D. At London Euston Station.



**5. Which sentence is TRUE?**

- A. The woman doesn't help the man.
- B. The man has been to England before.
- C. The man works for the Tourist Information Centre.
- D. The man wants to know how to go to Manchester.

**LISTENING COMPREHENSION 2**

**Read the following questions first. You have two minutes.  
Now you are going to listen to a dialogue twice. Listen to it carefully and then answer the questions according to the text you have heard.**

**A SURVEY ON TV WATCHING HABITS****6. What's the woman's name?**

- A. Ana Wilder.
- B. Anne Wylder.
- C. Anne Wilder.
- D. Anne Bill.

**7. What's the woman's telephone number?**

- A. 05512063.
- B. 05112063.
- C. 05122064.
- D. 05122063.

**8. Complete the following sentence.**

The woman was born in \_\_\_\_\_ on 9<sup>th</sup> \_\_\_\_\_ 1949.

**9. Which of the following sentences is FALSE?**

- A. The woman is married.
- B. The woman is single.
- C. The woman is American.
- D. The woman lives in Britain.

**10. What's the woman's job?**

- 

**WRITING 1****THESE PEOPLE'VE GOT TALENT!**

**These three people have decided to enter a music contest.**

**Name:** Justin "Twenty Fingers" Case.

**City:** London.

**Instrument:** Piano.

**Type of music:** Classical.

**Why do you want to win?** "Music is my life. I want to share my talent with the world."





**Name:** Bernie “Sweet Lips” Porkyard.  
**City:** Sidney.  
**Instrument:** Trumpet.  
**Type of music:** Jazz, Salsa.  
**Why do you want to win?** “My wife and children say I'm ridiculous.  
 I want to prove them wrong.”



**Name:** Gregor “The Tiger” González.

**City:** Los Angeles.  
**Instrument:** Electric guitar.  
**Type of music:** Punk-rock.  
**Why do you want to be win?** “I want to be famous,  
 rich and meet lots of girls.”

**11. Choose which one you like best and describe him as he appears in the picture. Say, also, why you think he is going to win. You can use some or all the information next to the pictures. (60-80 words)**

- 

11a

11b

11c

11d

11e

**WRITING 2****ALL ABOUT YOU!**

**Complete the FACT FILE with information about YOU.**

Fact file

Name:

Age:

Town:

Hair:

Eyes:

Brothers and sisters:

Hobbies:

Favourite colours:

Lucky number:

Favourite foods:

Favourite stars:

**Use the information in the fact file. It is not necessary to include everything in the file and you can give extra information. (60-80 words)**

**ALL ABOUT YOU!**

•

**12a****12b****12c****12d****12e**



**READING COMPREHENSION 1**

Read the texts carefully and answer the questions.

**THE CYCLIST**

Tom is a very active person and he often goes out to the country to ride his bike at the weekends. He sometimes goes with his friends but he usually rides alone. Unfortunately, Tom has an accident nearly every time he goes, so when his friends see him at school on Monday morning he's often got a pain in his back or in his leg or something similar. Tom also plays football on Mondays and Wednesdays. He's not very good but he always plays because he likes all kinds of sport.

This weekend Tom is not out in the country and he can't go out and ride his bike because he's in bed. He's got a headache, a sore throat and he's feeling very tired. His mum says he's got the flu and she says he can't play football this week either. Tom never misses a game of football and he's not happy!

(Adapted from English Zone 2 Pearson Education, SA. 2002)

13. He \_\_\_\_\_ goes with his friends

- A. always.
- B. sometimes.
- C. never.
- D. ever.

**14. On Mondays he often has...**

- A. the flu.
  - B. a pain.
  - C. a headache.
  - D. a sore throat.
- 

**15. He \_\_\_\_\_ sport.**

- A. like.
  - B. likes.
  - C. don't like.
  - D. doesn't like.
- 

**16. According to the test, which of the following sentences is TRUE?**

- A. Tom is a dynamic person.
  - B. He is very good at sport.
  - C. He plays tennis on Mondays.
  - D. On Monday morning he never goes to school.
- 

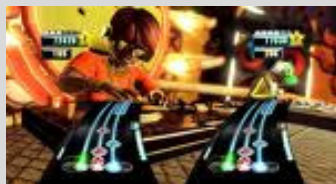
**17. Why isn't Tom happy this weekend?**

- 



## READING COMPREHENSION 2

### DJ HERO



The new game of the Guitar Hero series includes 93 original mixes of pop, rock, hip-hop and electronic music.

Now, you can become the hero of the party thanks to the new accessory: a turntable controller that is very easy to use. You can play 93 mixes of the best songs of different types of music, including hip-hop, pop, rock and electronic music.

DJ Hero will be in the shops next October. It incorporates the most famous songs of artists such as Rihanna, 50cent, Michael Jackson and Eminem.

#### CHARACTERISTICS OF THE GAME

Let's go party! At home or at the disco, DJ Hero offers players the opportunity to be the star of the night. Join the group of numerous artists that appear as characters in the game.

#### PLAY MODES: 1 DJ, 2 DJs and DJ +guitar

'1DJ' mode is competitive: DJ vs DJ. You can play against your friend and find out who is the best virtual DJ. In '2 DJs' mode, you can mix and scratch together, and a third player can join in the song by using the microphone. Finally, by using the "Guitar Hero" guitar, you can play many of the songs in the game in the 'DJ +guitar' mode.

#### LIFE!

DJ Hero introduces players to the most spectacular parties, with designs and graphics that imitate authentic clubs, such as a Hollywood mansion, a London rave party or a famous disco in Ibiza.

The DJ Hero box includes the following items:

DJ Hero game.

Turntable controller.

Carrying case.

An exclusive pack of CDs with Jazzy Jeff and Eminem hits specially designed by the artist Shepard Fairey.

Adapted from [www.guitarhero.es](http://www.guitarhero.es)

---

**18. How many mixes does DJ Hero include?**

- A. Thirty-nine.
  - B. Ninety-nine.
  - C. Ninety-three.
  - D. Ninety.
- 

**19. Which of the following sentences is false?**

- A. DJ Hero includes different types of music.
  - B. DJ Hero has got three competitive modes.
  - C. DJ Hero designs and graphics imitate different places.
  - D. The DJ Hero box includes four items.
- 

**20. According to the text, you choose the \_\_\_\_\_ to sing a song**

- A. '1 DJ' mode.
  - B. '2 DJs' mode.
  - C. '2 DJs' or '1 DJ'.
  - D. 'DJ + guitar' mode.
- 

**21. Which two adjectives describe the turntable controller?**

•

---

**22. Who created the exclusive pack of CDs?**

- A. Eminem.
  - B. Shepard Fairey.
  - C. Jazzy Jeff.
  - D. Rihanna.
-